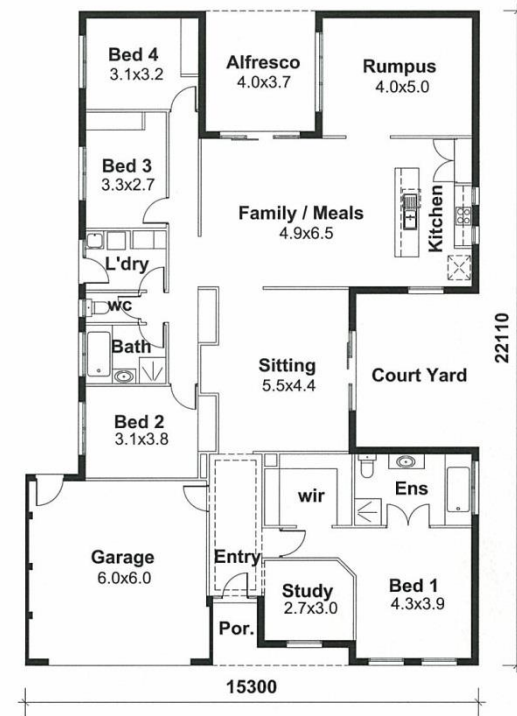


Stirling 240E

Area: 265 m² (28.53 sq)

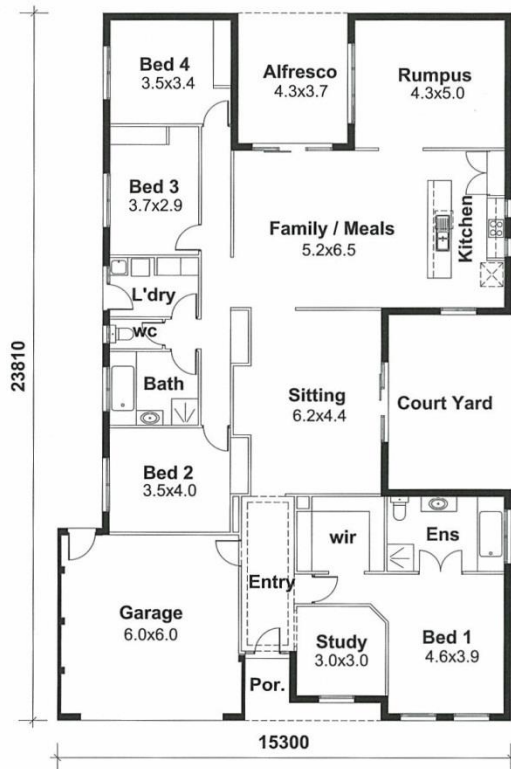
Minimum width of site required
17.05mm. Conditions apply.



Stirling 250E

Area: 289 m² (31.11 sq)

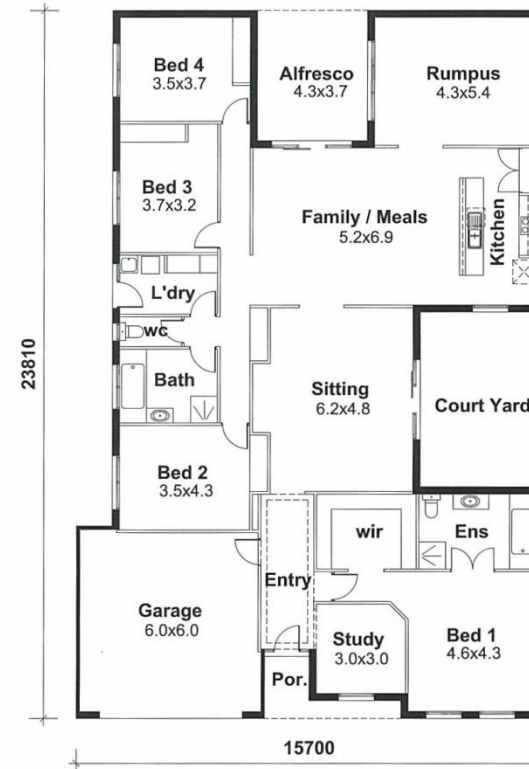
Minimum width of site required
16.65mm. Conditions apply.



Stirling 270E

Area: 314 m² (33.80 sq)

Minimum width of site required
16.65mm. Conditions apply.



Stirling 290E

Area: 328 m² (35.31 sq)

Minimum width of site required
17.05mm. Conditions apply.