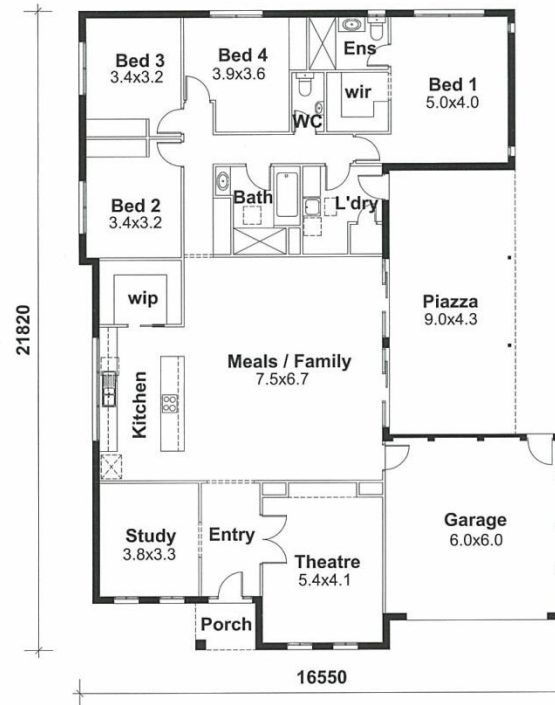


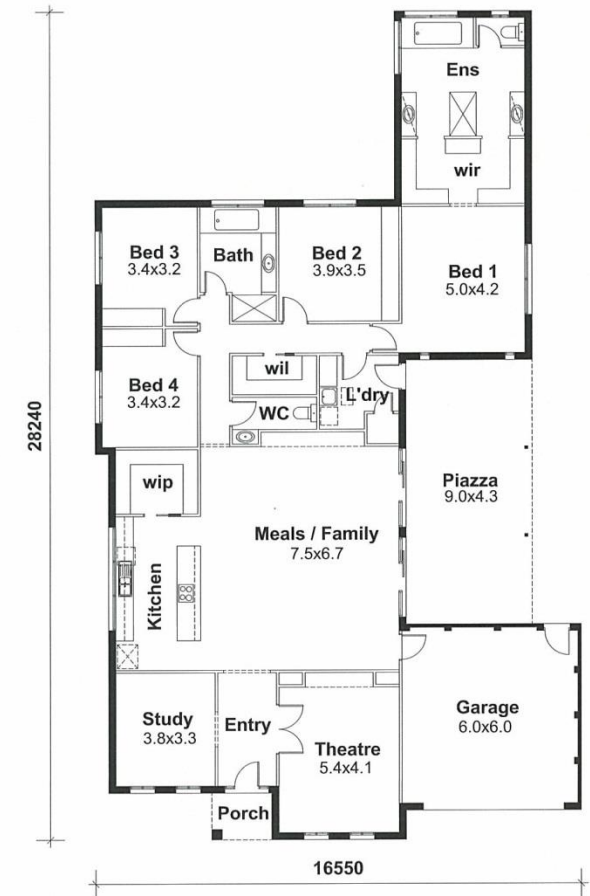
Portofino 250E

Area: 320 m² (34.45sq)
Minimum width of site required
17.90m. Conditions apply.



Portofino 260E

Area: 320 m² (34.45 sq)
Minimum width of site required
17.90m. Conditions apply.



Portofino 290E

Area: 350 m² (37.67 sq)
Minimum width of site required
17.90m. Conditions apply.