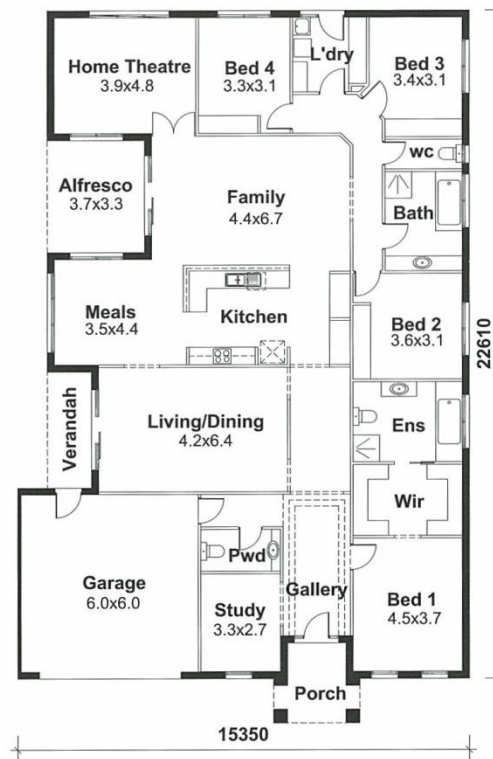


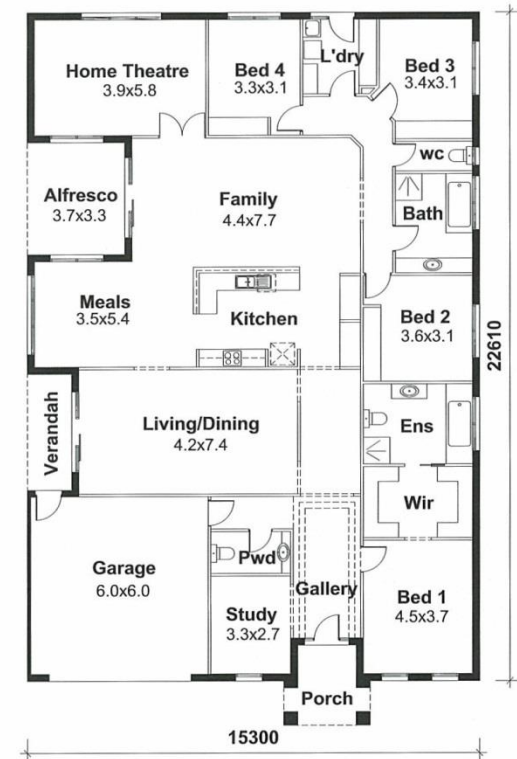
Carrington 280E

Area: 315 m² (33.91 sq)
Minimum width of site required
16.65m. Conditions apply.



Carrington 300E

Area: 335 m² (36.06 sq)
Minimum width of site required
16.70m. Conditions apply.



Carrington 320E

Area: 351 m² (37.78 sq)
Minimum width of site required
16.65m. Conditions apply.