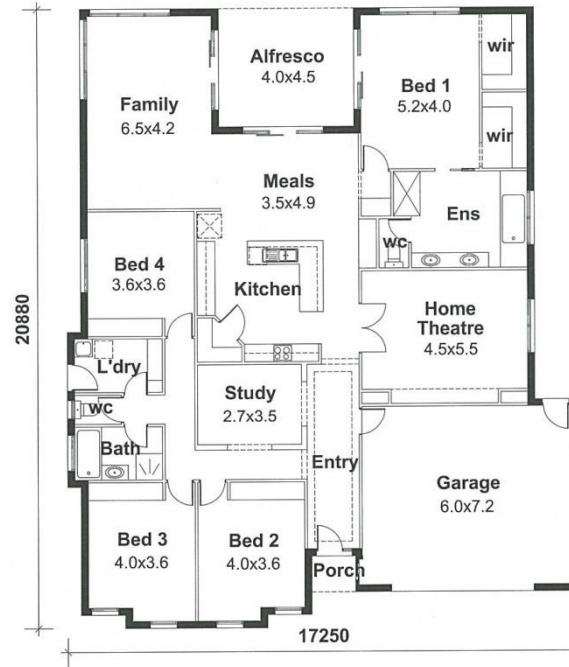


Beaufort 250E

Area: 297 m² (31.97 sq)

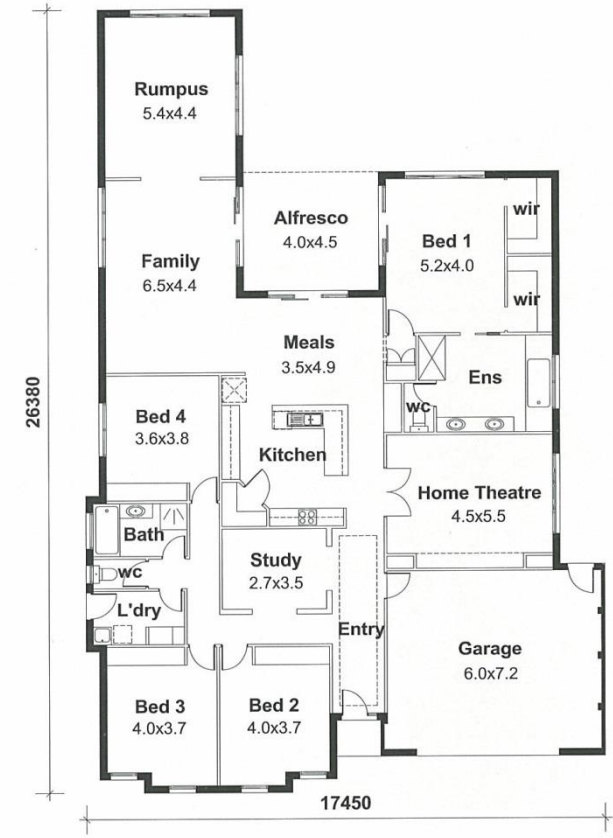
Minimum width of site required
18.00m. Conditions apply.



Beaufort 270E

Area: 321 m² (34.55 sq)

Minimum width of site required
18.60m. Conditions apply.



Beaufort 320E

Area: 352 m² (37.89 sq)

Minimum width of site required
18.80m. Conditions apply.